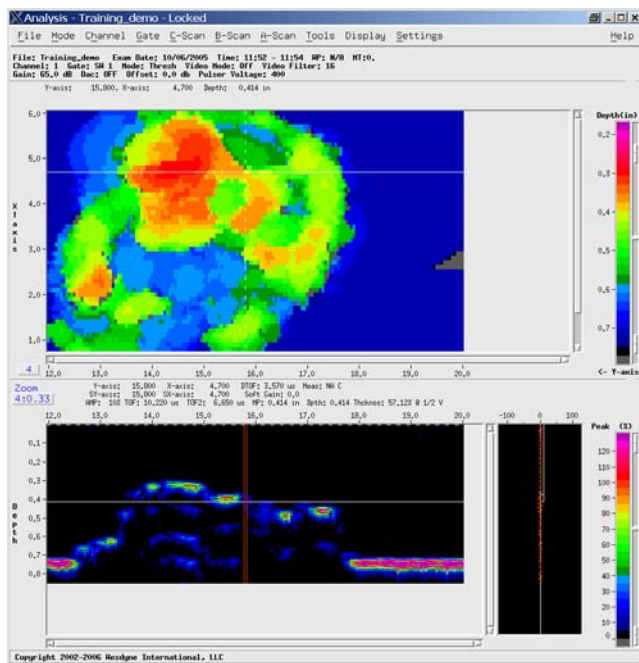


C-MAPPS

IntraSpect C-MAPPS is a new DSP based Turnkey Ultrasonic Corrosion Mapping System manufactured by WesDyne NDE Products & Technology. The data acquisition and automated motion control are built into a single small unit. For ease of use in the field and back at the office, the data is displayed and stored on a ruggedized tablet PC. A field proven scanner is supplied for delivery of the probe to the inspection surface.

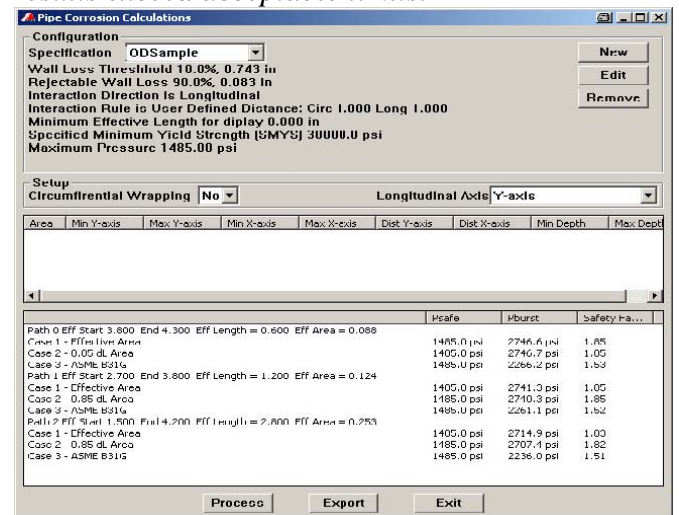
IntraSpect C-MAPPS is a total corrosion mapping solution. The IntraSpect corrosion mapping system is designed to provide a complete corrosion assessment and imaging solution for the detection and monitoring of corrosion in the energy, and oil & gas industries.

STATISTICS are generated from the acquired data. This software tool will automatically locate the minimum and maximum wall thickness out of thousands of readings. It also provides various statistics such as identification of areas above and below a specified wall loss threshold.



Top-view C-scan mapping along with cross-section B-scans provide a visual profile of the ID and or OD inspection surface. The IntraSpect software has a number of display features including the ability to calculate and display a remaining wall C-scan by subtracting the depth of an area of corrosion from the nominal wall thickness.

AUTOMATED RStreg has been incorporated into the IntraSpect system as an optional software tool. RStreg is an engineering calculation, licensed by Technical Toolboxes, used for determining pipeline burst pressures when there is ID or OD corrosion present. The automated RStreg software calculates multiple paths through the corrosion and lists the results. The operator then reviews the list to determine if any of the results exceed acceptable limits.



WesDyne NDE Products & Technology
 20 International Drive
 Windsor, CT 06095
 (USA)

Voice: (860) 731-1683 FAX: (860) 731-2481
 e-mail: sales1@amdataproducts.com
 Web Site: www.amdataproducts.com
 © Copyright 2010 Westinghouse Electric Company LLC
 All rights reserved. All specifications subject to change.



C-MAPPS



Features

- DSP based acquisition system is used to perform data collection, processing (filtering, sample rate changes, and compression), and transfer data to a Tablet PC analysis computer.
- Typical use: 1 MHz to 12 MHz transducers, pulse echo, pitch-catch or TOFD
- Integrated data acquisition and manual scanner interface.
- 100 ft umbilical between data collection unit and transducer

Pulser Section Features

- Single channel system
- Square Wave pulser with Pulse widths from 30 ns to 600 ns in 10 ns steps
- 50 Ohm fixed damping
- Single or dual mode selection
- 0 to 400 V pulser voltage in 50 V steps
- Low EMI type design

Receiver Section Features

- 82 dB dynamic range
- Calibration EEPROM
- Fixed High-Pass filter set for 400 KHz (single pole)
- Multi-Pole fixed Low-Pass Filter set at 22 MHz

A/D Circuits

- 12 bit A/D
- Differential signal input for lower noise/distortion
- Fixed 50 MSPS sampling rate

DSP Features

- RF or Video rectified recording of data
- RS-232 Port for diagnostics
- DSP high pass and low pass digital filters
- Video Compression
- Minimum time resolution: 5 ns

Software Features

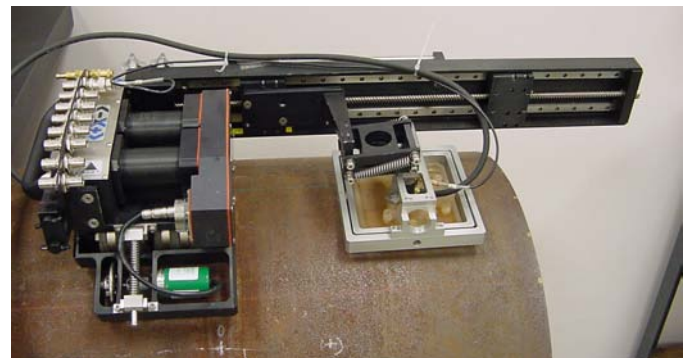
- RF or Video rectified recording of data.
- A-scan, B-scan, C-scan, D-scan Analysis Displays
- Automated RStreng engineering package
- C-scan Statistics and ASCII output for subsequent importing into spreadsheets

Automated and Manual Scanner Interface

- Two axis servo motor
- Supports any two axis AMDATA automated scanner
- Supports any encoded manual scanner

Complete Turnkey System

- Windows Tablet PC with Acquisition & Analysis software
- Data Acquisition & Motion Control Module
- 5080 Robotic magnetic wheel scanner
- 100' Umbilical motion control & data cable
- "Pump in a Box" Couplant delivery system
- Transducer



Options

- OD Corrosion sled and software
- Scanner tracks for use on nonferrous inspections
- Net Book Computer in place of Ruggedized Tablet



WesDyne NDE Products
& Technology
20 International Drive
Windsor, CT 06095
(USA)

Voice: (860) 731-1683 FAX: (860) 731-2481
e-mail: sales1@amdataproducts.com
Web Site: www.amdataproducts.com
© Copyright 2010 Westinghouse Electric Company LLC
All rights reserved. All specifications subject to change.

