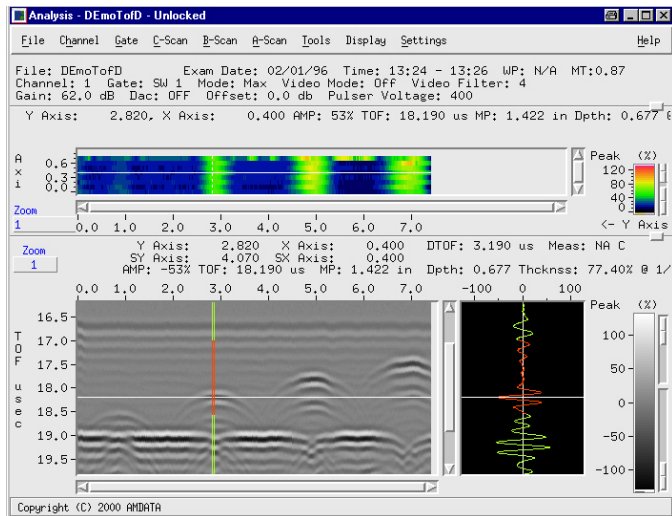


TOFD Inspection

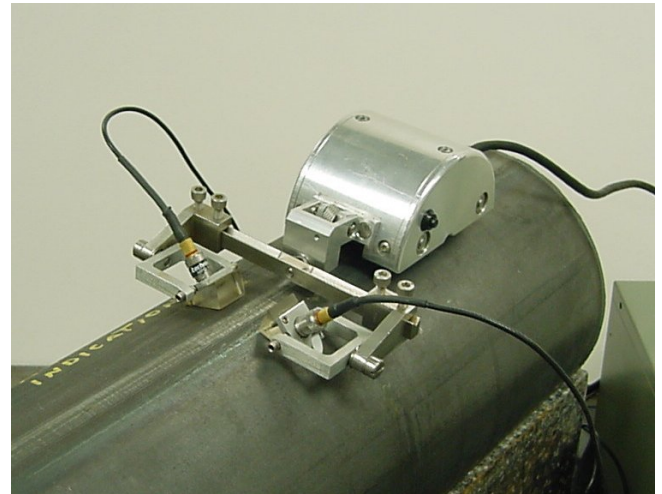
TOFD Software Features

The standard IntraSpect imaging software package has the latest TOFD features including B-scan auto linearization and lateral wave straitening for accurate depth readings, polar gray scale for enhanced B-scan displays and hyperbolic cursors for advanced data analysis. During calibration the live B-scan display and auto calibration feature makes setup quick and easy. The delta cursor allows the operator to measure the difference in depth within the B-scan display.



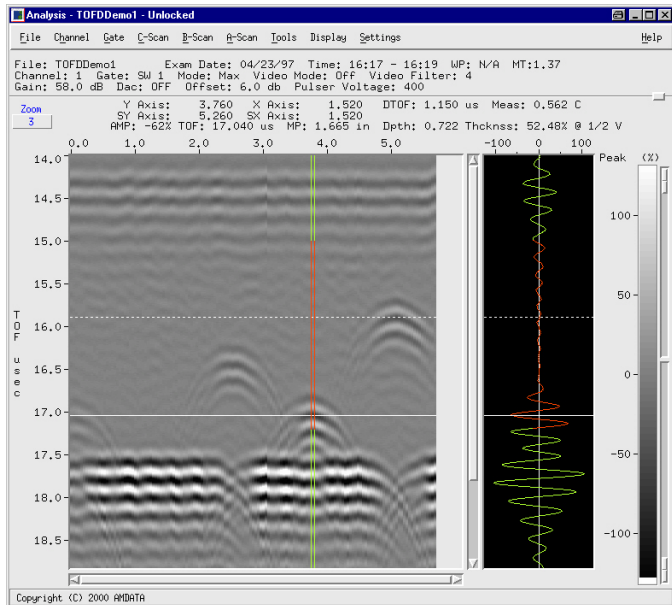
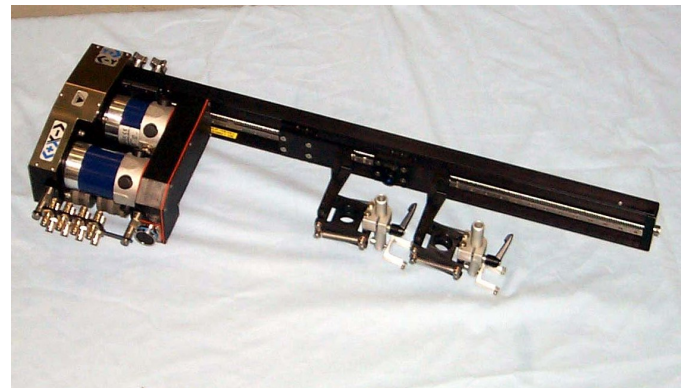
Manual Scanning

Imaging system operators have the capability to perform TOFD inspection of complex geometries with a minimal amount of hardware. This is due to the creation of WesDyne NDE Products & Technology's latest manual scanner known as the "Field Mouse". The Field Mouse combined with one of WesDyne NDE Products & Technology's adjustable dual probe fixtures and the IntraSpect software makes TOFD portable and economical.



Automated Scanning

For the larger TOFD inspection projects requiring automated scanners, WesDyne NDE Products & Technology's line of standard pipe scanners with a dual gimbal arm makes the IntraSpect a powerful and flexible inspection package.



**WesDyne NDE Products
& Technology**
20 International Drive
Windsor, CT 06095
(USA)

Voice: (860) 731-1683 FAX: (860) 731-1681
e-mail: sales1@amdataproducts.com
Web Site: www.amdataproducts.com
© Copyright 2010 Westinghouse Electric Company LLC
All rights reserved. All specifications subject to change.

